

## Information pest: *Citrus exocortis virus*

*Citrus Exocortis viroid (CEVd)* is around 370 nucleotides in size and belongs to the genus *Pospiviroid* of the family *Pospiviroidae*. *CEVd* is responsible of the exocortis disease of Citrus, characterized by symptoms of bark scaling and severe stunting. *CEVd* is a widespread viroid in various producing areas. The disease is easily transmitted using infected-rootstocks and mechanically.

## Introduction

*CEVd* lacks RNA self-cleavage activity and presents a central conserved region (CCR) and a terminal conserved region (TCR). The SYBR *Citrus exocortis viroid* set has been developed by Qualiplante based on the amplification of a target sequence located in the upper CCR.

*This product should be used only for research purposes.*

## Intended use

The qPCR set is validated for the detection of *Citrus exocortis viroid* in One-Step Real-Time RT-PCR (SYBR-Green® technology). The SYBR-Green® technology allows to confirm that a sample generating an amplification signal is produced only by nucleic acids of the pathogen of interest, by interpreting the melting peak.

This set offers a sensitive diagnostic method to detect *CEVd* and permits to avoid amplicon contamination in routine diagnosis. Suitable tissues are plant leaves. The performance of this set has been demonstrated using several nucleic acid extraction procedures (e.g. Promega Viroid RNA extraction from lemon leaves using Maxwell® RSC) and different viroid-infected host species (Etrog citron, sour orange, trifoliolate orange, *G. aurantiaca*, Washington navel sweet orange, Fino lemon, Mexican lime, calamondin, *C. depressa*, *C. karna*, *C. bergamia*, *C. pyriformis* and eggplant).

## Set format and content

Two sets are available for 24 and 96 tests.

Article N°	Product name
7CEVd-S2	SYBR <i>Citrus exocortis viroid (CEVd)</i> - set 24
7CEVd-S9	SYBR <i>Citrus exocortis viroid (CEVd)</i> - set 96

Content	set 24	set 96
Direct Master Mix	24 tests 7CEVd-S2-DM-	2x48 tests 7CEVd-S9-DM-
RT-Enzyme	24 tests 7CEVd-S2-RT-	96 tests 7CEVd-S9-RT-
Positive Control	3 tests 7CEVd-S2-PC-	8 tests 7CEVd-S9-PC-
Negative Control	3 tests 7CEVd-S2-NC-	8 tests 7CEVd-S9-NC-

Version 02 – 01/11/2020. Adaptations from last version: complete redesign of the protocol

## Storage conditions

This set can be shipped at room temperature but upon receipt it should be stored immediately at the recommended storage temperature: **from -30 ° C to -10 ° C**.

Avoid prolonged exposure to light and repeated freeze and thaw cycles.

## Shelf life

If the set is correctly stored, at constant-temperature freezer, its performance is guaranteed until the expiration date indicated on the tubes label.

## Materials and equipment (not provided)

- RNA extraction tools and reagents
- Nuclease-free filter tips and micropipettes
- Optical grade nuclease-free tubes/plate
- Disposable latex or vinyl gloves
- Thermal cycler for Real-Time PCR with filters calibrated for SYBR-Green®

## Nucleic acids extraction

Extract RNA from samples according to your usual protocol. Upon request, Qualiplante can recommend you an extraction method.

## Preparation of the *CEVd* 1-Step master mix

- a) Slowly thaw **Direct Master Mix** and **RT-Enzyme** by placing it on ice or at 4°C.
- b) Shake briefly **Direct Master Mix** and **RT-Enzyme** and spin down the liquid.
- c) In a new tube called **CEVd 1-Step master mix**, mix 17,6 µl of **Direct Master Mix** and 0,4 µl of **RT-Enzyme** per reaction. Do not forget to count the **Positive Control** and the **Negative Control** in the number of reactions to prepare.

Example:	1 rxn	10 rxns
Direct Master Mix	17,6 µl	176,0 µl
RT-enzyme	0,4 µl	4,0 µl

- d) Store the **CEVd 1-Step master mix** by placing it on ice or at 4°C.

## Reaction set-up

- a) Shake briefly **CEVd 1-Step master mix** and spin down the liquid.
- b) Add 18 µl of **CEVd 1-Step master mix** (without RNA template) to each PCR tubes or wells of an optical-grade PCR plate.
- c) Add 2 µl of RNA template to the **CEVd 1-Step master mix**. Do not forget to prepare a PCR tube or well of an optical-grade PCR plate for the **Positive Control** and the **Negative Control**.



Components	Volume/PCR tube or well
RNA template or Positive control or Negative control	2 µl
<b>CEVd 1-Step master mix</b>	18 µl
Total Volume / PCR tube or well	20 µl

In order to confirm the absence of any reagent's contamination, we strongly recommend including a no-template control (e.g. DEPC water) in the assay.

### Run and thermal cycling

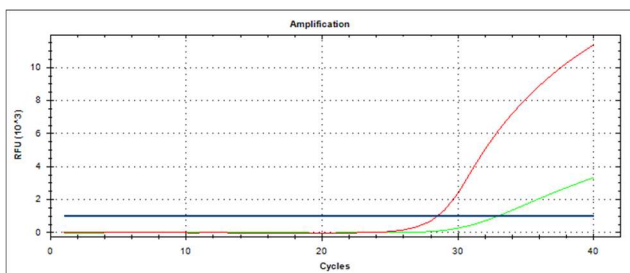
- Seal carefully the PCR tubes or PCR plate. Centrifuge briefly to collect components at the bottom of the PCR tubes or wells of the plate. Protect from light before thermocycling.
- Load the PCR tubes or plate into the thermal-cycler and follow the thermal cycling below:

Steps	Temp (°C)	Time	Cycle(s)
Reverse transcription	40°C	15 min	1
Enzyme activation	95°C	10 min	1
Denaturation	95°C	15 sec	40
Annealing	60°C	30 sec	
Elongation	72°C	30 sec	
Melt temperature	Follow the instructions of your thermal cycler		

### Results analysis

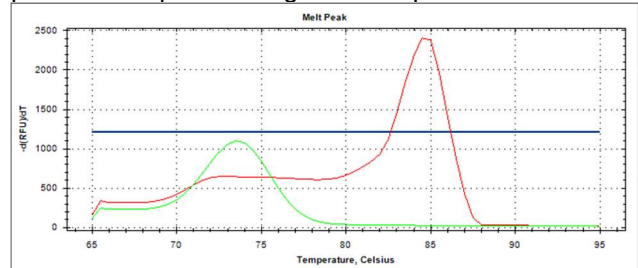
The reaction for CEVd will generate a specific SYBR®-labeled amplification curve and a specific melting-curve.

**Fig.1:** Example of amplification curves relative to a CEVd positive sample and negative sample.



**fig.1** shows the amplification curves associated to a CEVd infected sample or **Positive Control** (red curve) and to a healthy sample or **Negative Control** (green curve).

**Fig.2:** Example of melting curves relative to a CEVd positive sample and negative sample



**fig.2** shows the melting curve associated to a CEVd infected sample or **Positive Control** (red curve - Tm=84,5°C) and to a healthy sample or **Negative Control** (green curve) on Biorad CFX96 machine.

### ANALYSIS VALIDATION AND RESULTS INTERPRETATION

For a correct interpretation of results, always:

- check if results of **Positive Control** and **Negative Control** pass,
- combine amplification curves analysis with melting curves analysis,
- confirm that the samples melting temperatures match the **Positive Control** melting temperature.

#### Step 1: Check the Ct values of **Positive Control** and **Negative Control**

Well	Ct	Interpretation
<b>Positive Control</b>	30 or less	Go to step 2 and 3
	Above 30 or no Ct	Fail*
<b>Negative Control</b>	No Ct	Go to step 2 and 3
	Less than 30	Fail**

\* Repeat the assay, ensuring that steps of the user guide are carefully performed

\*\* The mix or the **Negative Control** was contaminated with CEVd nucleic acids. Repeat the assays after identifying and removing the potential source of contamination

#### Step 2: Check Ct value in the samples well

Well	Ct	Interpretation
Sample	35 or less	Go to step 3
	More than 35 or no Ct	Negative

#### Step 3: See melting temperature

Well	Tm	Interpretation
Sample	Tm differs no more than $\pm 1^\circ\text{C}$ from Tm of <b>Positive Control</b>	Positive
	Tm differs more than $\pm 1^\circ\text{C}$ from Tm of <b>Positive Control</b>	Negative

## Special handling instructions

This set was designed to be used by laboratory staff trained to follow the usual molecular biology precautions. Always perform the tests in a nuclease-free work environment. Always wear gloves when handling samples containing DNA/RNA and the components of the set. Do not touch any set components with an ungloved hand. Use appropriate laboratory disposable parts. Use nuclease-free tubes and filter tips to avoid degradation and cross-contamination. Do not use components from sets with different batch numbers in the same test procedure. Do not interchange reagents with other sets. To avoid cross-contamination, use separate rooms for (a) nucleic acids extraction, (b) preparation of the Master Mix and (c) amplification. To avoid cross-contamination and obtain reliable results, it is essential to strictly follow the protocol in this manual. Avoid unnecessary freeze-thaw cycles of the set components. Do not use reagents after their expiration date.

## Troubleshooting

**Post-PCR data analysis shows no amplification, or amplification plots look grossly abnormal:**

Possible causes	Corrective actions
Evaporation of the sample due to inadequate sealing of the plate	Repeat the test using the appropriate tools to seal correctly the plate
Consumables are not appropriate for the method	Repeat the test using consumables recommended by the thermal cycler supplier
The quality of nucleic acid extracted is low	Repeat the extraction step. Ensure that the method of extraction has been performed correctly. In any doubt, contact us
Abnormal amplification	Centrifuge the plate briefly to spin down the contents and eliminate any air bubbles

**No amplification reaction is observed in the positive control well, while other samples are positive:**

Possible causes	Corrective actions
The positive control provided with the set was not added into the reaction well	Repeat the test. If the problem persists, contact us

**An amplification plot is observed in the negative control well:**

Possible causes	Corrective actions
Contamination of the negative control or the Master Mix with target-positive nucleic acid	Repeat the test by applying appropriate quality procedures to prevent contamination. Seal the plate correctly

## Warranty and Responsibilities

Qualiplante SAS guarantees the buyer exclusively concerning the quality of reagents and of the components used to produce the Sets. Any product not fulfilling the specifications included in the product sheet will be replaced. This warranty limits Qualiplante SAS responsibility to the replacement of the product. No other warranties, of any kind, express or implied-are provided by Qualiplante SAS.

Qualiplante SAS is not responsible and cannot anyway be considered responsible or jointly responsible for possible direct and indirect damages resulting of the use and/or the misuses of the Sets. The user consciously and under her/his own responsibilities decides for the utilization purposes of the Sets and uses it the way she/he considers most suitable in order to reach her/his goals and/or objectives. Qualiplante SAS is not responsible for the data resulting from the use of the Sets, for the utilization that the user independently decides to make of them or for the direct or indirect damages possibly resulting from the disclosure or transmission of the data themselves to third parties under any form or circumstance. This clause is automatically accepted by the user when purchasing the Sets. Some of the applications which may be performed with this product may be covered by applicable patents in certain countries. The purchase of this product does not include or provide a license to perform patented applications. Users may be required to obtain a license depending on the country and/or application. Qualiplante SAS does not encourage the unlicensed use of patented applications. The Sets may require the use of Taq Polymerase enzyme, DNA binding components and fluorochromes/quencher, often registered as trademark by companies. The product, equipment and information included in the Sets consist of assembled reagents. The Sets are designed for the services supply, quality control or any other application that is not exclusively an internal company's research and requires a specific license for PCR and Real-Time PCR use. The license and authorization for PCR and Real-Time PCR use are not included in the Sets. The user is responsible for setting prefixed goals, choosing whether or not to perform the PCR or Real-Time PCR reaction and to apply for register her/his own license.

The Sets have been internally tested by our quality control. Any responsibility is waived if the warranty of quality control does not refer to the specific Sets. The user is personally responsible for data that she/he will obtain and/or she/he will supply to third parties using these Sets. Once the sealed package is opened the user accepts all the conditions without fail; if the package is still sealed the set can be returned and the user can be refunded.

Sets components are intended, developed, designed, and sold for Research Purpose Only. Product claims are subject to change.